



juniperaspect™

[field mapping solutions]

Juniper Aspect™ is a mobile, state of the art mapping solution for field professionals. Designed with flexibility and customization in mind, Juniper Aspect meets the unique and specific mapping needs of its users, resulting in accurate as-built and field asset documentation verified by GIS technology. The intuitive user interface of Juniper Aspect is tailored to field crews and maintenance technicians, promising ease of use and simple adoption into everyday processes.

© Copyright 8/12 Juniper Systems, Inc. Preliminary information. All trademarks are registered or recognized by its respective owners. Windows Mobile and the Windows logo are trademarks of the Microsoft group of companies.



1132 West 1700 North, Logan, Utah 84321 USA

juniperaspect™

[field mapping solutions]

Use Juniper Aspect™ For:

- As-Built Documentation
- Tree Inventories
- New Customer Assessments
- Water Efficiency Audits
- Certified Meter Reading
- Field Asset Documentation
- Field Asset Inspection
- Field Repair Assessments
- Tree and Vegetation Maintenance



Juniper Aspect™ featured on the Juniper Systems Archer Field PC® and Mesa® Rugged Notepad.

How Juniper Aspect™ Benefits You:

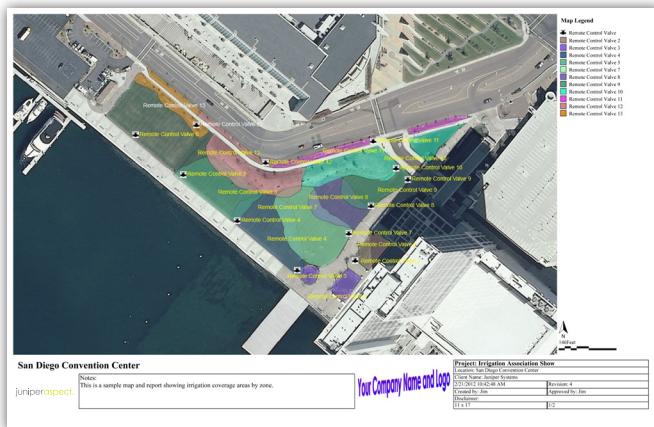
- Increased profits from new revenue opportunities
- Time saved with accurate as-built and asset documentation
- Improved communication with field personnel and customers
- Faster repairs with GPS guidance to hard-to-find components
- Cleaner maintenance, repair, and upgrade documentation
- Water conservation records for painless auditing
- GPS verifiable documentation for accurate billing
- Get an edge on the competition using GIS/GPS technology



ESRI
Technology
AUTHORIZED
BUSINESS PARTNER



Irrigation Valve Coverage



Street and Traffic Sign Inventory

